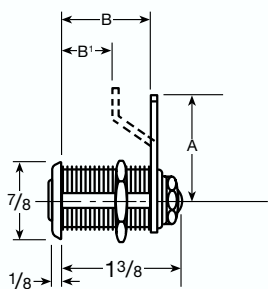




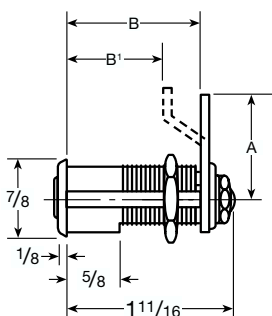
**15783 & 15890  
CAM LOCKS  
with LAZY CAM FUNCTION**  
Pin Tumbler  
Can be Masterkeyed

**Keyways Available:** R1 & CR  
**Material:** Brass  
**Key Blank No.:** 8618C - R1 (5-Pin)  
**Cam Rotation:** Furnished with 90 degree rotation clockwise from 12 to 3 o'clock, 3 to 6 o'clock, 6 to 9 o'clock, or 9 to 12 o'clock. Specify cam rotation on order.

**Operation:** Lock operated by full turn of key. Key removable in locked or unlocked position. Can also be set so that key is removable in locked position only with 90 degree cam rotation.  
**Cylinder:** Slabbed on one side



**No. 15783**

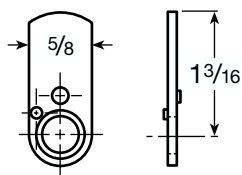


**No. 15890**

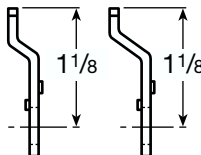
Cam No.	Cam Length	No.15783*		No. 15790*	
		Distance Under Head to Cam		Distance Under Head to Cam	
		B	B'	B"	B
205	1 3/16"	1"		1 5/16"	
206	1 1/8"		25/32"		1 3/32"
207	1 1/8"		11/16"		1"
208	1 1/4"		9/16"		7/8"
209	1 7/16"	1"		1 5/16"	
210	15/16"		29/32"		1 7/32"

\*Specify cam required on order, i.e., 15783 x 205.

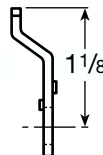
Part No./Cyl Length	Stock ID No.	MKYD	LIST PRICE EACH			Stock Qty.	Approx. Boxed Wt. (lbs./ oz.)
			US2G	US14	US26D		
15783		3.49		26.99	26.99		
15890		3.49		27.69	27.69		
205			1.81				
206			1.81				
207			1.81				
208			1.81				
209			1.81				
210			1.81				



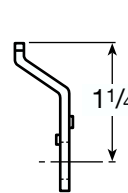
**205**



**206**



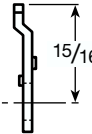
**207**



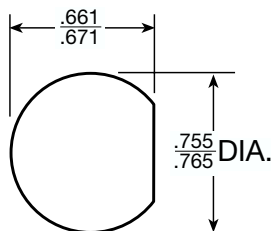
**208**



**209**



**210**



**Mounting Cutout:**  
"Single D" – Standard cutout for RH & LH Pin Tumbler Cam Locks

**Notes:**

- Stock items are not shaded and are available in stock quality units only. Use Stock ID No. when ordering stock items.
- Made - To - Order items are shaded.
- For explanation of finishing symbols, refer to Page 1.