



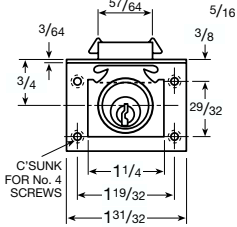
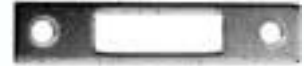
CHEST LOCKS • Pin Tumbler



0168
CHEST LOCK
Pin Tumbler
Can be Masterkeyed

Keyways Available: R1 & CR
Material: All brass
Hook Bolt: Not self locking, retracts when unlocked

Strike: No. 12S, brass US4 only, regularly furnished



HALF MORTISE MOUNTING

For Thickness of Material (A)		Regular Key Changes	Key Blank No.
Regular	Also Available		
7/8"		All Different	8618C-R1 (5 Pin)

Part No./Cyl Length	Stock ID No.	LIST PRICE EACH			Approx. Boxed Wt. (lbs./ oz.)
		MKYD	US4	Stock Qty.	
0168 7/8"		3.49	36.82		



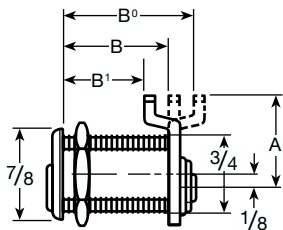
CAM LOCKS • Pin Tumbler



15748, 15749, & 15750
CAM LOCKS
Pin Tumbler
Can be Masterkeyed
Keyways Available: R1 & CR
Material: Brass
Key Blank No.:
8632C-R1 (4 pin) for 15748
8618C-R1 (5 pin) for 15749
8618C-R1 (5 pin) for 15750

Regular Key Changes: All different
Cams: See dimension in table. Cams measured from center of plug to end of cam. Other cam options on Page 16.
Cam Positions: Specify position when ordering. End of cylinder plug milled square and cams punched with square hole to allow cam to be applied in any one of four positions. Regular locked position for cam is at 12 o'clock.

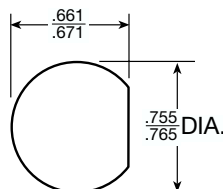
Cam Rotation: Furnished with 90 degree rotation (12 o'clock to 3 o'clock standard). Key removable in locked position only.
Cylinder: Slabbed on one side
Strike: No. 2540, brass, US4 only, furnished only when ordered



Cam No.	Cam Length	No.15748* Distance Under Head to Cam			No. 15749* Distance Under Head to Cam			No.15750* Distance Under Head to Cam		
		B	B'	B''	B	B'	B''	B	B'	B''
C2S	7/8"	5/8"			13/16"			1"		
C2L	1 1/4"	5/8"			13/16"			1"		
C3S	7/8"		1/2"		11/16"			7/8"		
C3L	1 1/4"		1/2"		11/16"			7/8"		
C4S	7/8"		3/8"		9/16"			3/4"		
C4L	1 1/4"		3/8"		9/16"			3/4"		
C5S	7/8"			3/4"			15/16"			1 1/8"
C5L	1 1/4"			3/4"			15/16"			1 1/8"
C6S	7/8"			7/8"			1 1/16"			1 1/4"
C6L	1 1/4"			7/8"			1 1/16"			1 1/4"

*Specify cam required on order, i.e. 15748 x C2S

Part No./Cyl Length	Stock ID No.	LIST PRICE EACH				Stock Qty.	Approx. Boxed Wt. (lbs./oz.)
		MKYD	US4	US14	US26D		
15748		3.49	20.60	20.60	20.60		
15749		3.49	23.11	23.11	23.11		
15750		3.49	25.12	25.12	25.12		



Mounting Cutout:
"Single D" –
Standard cutout for
RH & LH Pin Tumbler
Cam Locks