

CAM LOCKS • Disc Tumbler

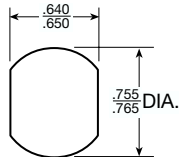
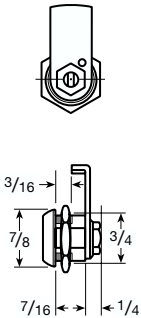


**15295D
CAM LOCK**
Disc Tumbler
Cannot be Masterkeyed.

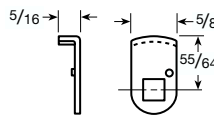
Key removable only in
locked position.
(90 degree rotation only)

Material: Pressure Cast.
Regular Key Changes: 200 with key
blank No. 5865 JVR (5 Disc)

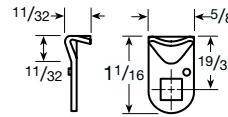
Part No./Cyl Length	Stock ID No.	MKYD	LIST PRICE EACH			Stock Qty.	Approx. Boxed Wt. (lbs./ oz.)
			US2G	US26D			
15295D		-		6.18			
15295A Cam			1.35				
15295D Cam			1.35				



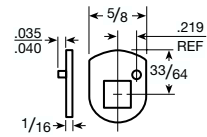
Mounting Cutout:
"Double D" – Standard
cutout for Disc Tumbler
Cam Locks



No. 15295D



No. 15295A



No. S16597

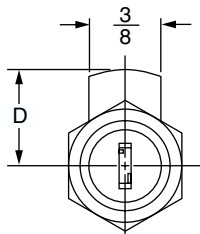


**C1091A
MINIATURE CAM
LOCK PACKAGE**
Disc Tumbler
Cannot be Masterkeyed

Material: Zinc die cast cylinders
Specifications: Miniature cam lock
available with removable style cam
only. Engineered for use in metal or
fiberglass products
Mechanism: 4 Disc tumbler single
bitted mechanism

Package Includes:

- 1 1/8" Straight Cam
- 1 1/8" Offset 11/32 cam
- Key Pulls / 12:00 and
3:00 position
- 90 degree rotation only



No. C-1091-A

**Recommended Application
Hole Size**

No. C1091A-KA-US14	No. C1091A-KD-US14
Key No. 105	Key No. 361-370
Distance	Distance
"D"	"D"
1 1/8"	1 1/8"

Part No./Cyl Length *	Stock ID No.	MKYD	LIST PRICE EACH			Approx. Boxed Wt. (lbs./ oz.)
			US14	Stock Qty.		
C1091A KA	10911		4.72	10	.7/0	
C1091A KD	10910		4.72	10	.7/0	

*Other keypulls and keying available with minimum quantity orders. Check with Customer Service.

Notes:

- Stock items are not shaded and are available in stock quality units only. Use Stock ID No. when ordering stock items.
- Made - To - Order items are shaded.
- For explanation of finishing symbols, refer to Page 1.