



15751, 15752, 15753, & 15760

CAM LOCKS

Disc Tumbler

Can be Masterkeyed

Material: Pressure cast

Regular Key Changes: 200 with key blank **5865JVR** (5 disc), 700 with key blank **8658JVR** (6 disc)

Masterkeyed Key Changes: 180 with key blank **5860KS** (5 disc), 700 with key blank **5861KS** (6 disc)

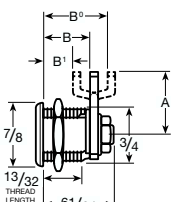
Cams: See dimension in table. Cams measured from center of cylinder to end of cam. Other cam options on Page 16.

Cam Positions: Regularly furnished with cam mounted at 12 o'clock locked position. Cam may be mounted at 3, 6, 9, or 12 o'clock locked position. Specify on order.

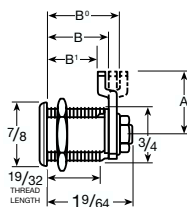
Cam Rotation: Regular rotation 90 degrees from 12 to 9 o'clock, key removable only in locked position at 12. Also available with 180 degree rotation from 12 to 6 o'clock so key can be withdrawn in both locked and unlocked positions. Specify when ordering.

Cylinder: Slabbed on both sides

Clip: No. **15751** also available with Clip (Page 15). Specify No. **C15751** for 18, 20, and 22 gauge metal.



No. 15751

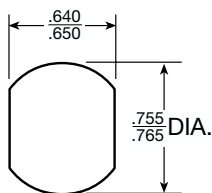


No. 15752

No. 15753

No. 15760

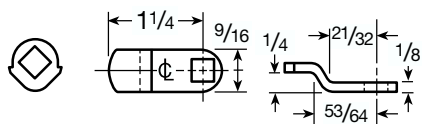
MOUNTING CUTOUT



Cam No.	Cam Length	No. 15751*			No. 15752*			No. 15753*			No. 15754*		
		Distance Under Head to Cam			Distance Under Head to Cam			Distance Under Head to Cam			Distance Under Head to Cam		
		B	B'	B''	B	B'	B''	B	B'	B''	B	B'	B''
C2S	7/8"	5/8"			13/16"			1"			1 1/4"		
C2L	1 1/4"	5/8"			13/16"			1"			1 1/4"		
C3S	7/8"		1/2"			11/16"			7/8"			1 1/8"	
C3L	1 1/4"		1/2"			11/16"			7/8"			1 1/8"	
C4S	7/8"		3/8"			9/16"			3/4"			1"	
C4L	1 1/4"		3/8"			9/16"			3/4"			1"	
C5S	7/8"			3/4"			15/16"			1 1/8"			1 3/8"
C5L	1 1/4"			3/4"			15/16"			1 1/8"			1 3/8"
C6S	7/8"			7/8"			1 1/16"			1 1/4"			1 1/2"
C6L	1 1/4"			7/8"			1 1/16"			1 1/4"			1 1/2"

*Specify cam required on order, i.e., 15751 x C2S.

Part No/Cyl Length	Stock ID No.	MKYD	LIST PRICE EACH			Stock Qty.	Approx. Boxed Wt. (lbs./ oz.)
			US4	US26D			
15751		2.23	5.39	5.39			
B15751 KD	00218			5.39	25	5/9	
B15751 KA - CAT30	00219			5.39	25	5/9	
B15751 CAT60	02656			5.39	25	5/9	
B15751 AUE1	02657			5.39	25	5/9	
B15751 MKY M8003(KD)	02654			5.39	25	5/9	
B15751		2.23	7.86	7.86			
C15751		2.23	6.06	6.06			
15752		2.23	6.38	6.38			
B15752 KD	02645			6.38	25	5/9	
B15752 KA - CAT30	02660			6.38	25	5/9	
B15752 CAT60	02661			6.38	25	5/9	
B15752 MKY M8003(KD)	02662			6.38	25	5/9	
B15752		2.23	8.19	8.19			
15753		2.23	7.01				
15760		2.23	6.94	6.94			
B15760 KD	00220			6.94	25	5/9	
B15760 KA - CAT30	02908			6.94	25	5/9	
B15760 CAT60	02659			6.94	25	5/9	
B15760 AUE1	02664			6.94	25	5/9	
B15760 MKY M8003(KD)	02665			6.94	25	5/9	
B15760		2.23	8.75	8.75			
K15760 Cam Lock, KD, Carded	00222			7.61	8	2/2	
K15760A Cam Lock, KA - CAT30, Carded	00223			7.61	8	2/2	
K15760 Carded			7.61				
K15760A KA - CAT30, Carded			7.61				



121F42
180j Stop Cam

C4L/C6L
1/4 Offset Cam

230F24
Pronged Washer

231F55
Escutcheon

Bulk Pack: B15751, B15752, & B15760 locks are individually polybagged in **US26D**, keyed different, keyed alike, and masterkeyed. Each lock is assembled with C2L cam, 12 to 9 rotation, and 2 keys. Accessories also included in polybag are shown at left.

Notes:

- Stock items are not shaded and are available in stock quality units only. Use Stock ID No. when ordering stock items.
- Made - To - Order items are shaded.
- For explanation of finishing symbols, refer to Page 1.